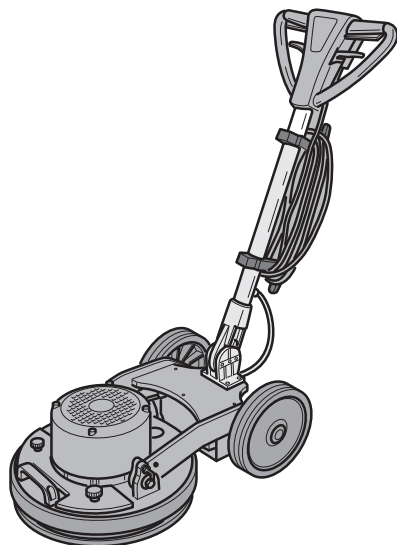




CE

AR30-931
ed. 04-2019



OR 17

- DE** Gebrauch und Wartung
- EN** Use and Maintenance
- FR** Utilisation et Entretien
- NL** Gebruik en Onderhoud
- PL** Obsługa i Konserwacja
- SK** Použitie a údržba
- CS** Použití a Údržba
- HR** Uporaba i Održavanje
- LT** Naudojimas ir priežiūra
- AR** الاستخدام والصيانة

DE**KENNDATEN**

Die Maschinenkenndaten und die Aufprägung "CE" befinden sich auf dem Schild an der Maschine.

Wir empfehlen, das Maschinenmodell und die dazugehörige Seriennummer in die Tabelle auf der nachfolgenden Seite einzutragen.

EN**IDENTIFICATION DATA**

The machine identification data and "CE" marking are located on the plate on the machine body.

It is advisable to note the machine model and serial number on the table on the next page.

FR**DONNÉES D'IDENTIFICATION**

Les données d'identification et le marquage « CE » de la machine se trouvent sur la plaque située sur le corps de la machine.

Nous vous conseillons de recopier le modèle de la machine et le numéro de matricule correspondant dans le tableau reporté sur la page suivante.

NL**IDENTIFICATIEGEGEVENS**

De identificatiegegevens en de "CE"-markering van de machine bevinden zich op het plaatje dat op de machine is aangebracht.

We raden u aan het model en het serienummer van de machine in de tabel op de volgende pagina te vermelden.

PL**DANE IDENTYFIKACYJNE**

Dane identyfikacyjne i oznakowanie "CE" urządzenia umieszczone są na tabliczce znamionowej znajdującej się na korpusie urządzenia.

Zaleca się wpisać model i numer seryjny urządzenia do tabeli znajdującej się na kolejnej stronie.

DE EG- Konformitätserklärung

Hiermit erklären wir, dass die nachfolgend bezeichnete Maschine aufgrund ihrer Konzipierung und Bauart sowie in der von uns in Verkehr gebrachten Ausführung den einschlägigen grundlegenden Sicherheits- und Gesundheitsanforderungen der EG-Richtlinien entspricht. Bei einer nicht mit uns abgestimmten Änderung der Maschine verliert diese Erklärung ihre Gültigkeit.

Produkt
EINSCHLEIBENMASCHINE

MODELL
OR 17

KENNNR.
00-133EL-AR

Einschlägige EG-Richtlinien
2006/42/CE (+2009/127/CE)
2014/30/UE
2011/65/UE

Angewandte harmonisierte Normen
EN 60335-1
EN 60335-2-67

Angewandte nationale Normen
-

Name und Beruf der autorisierten Person, welche die Erklärung unterzeichnet.
Sami Memili, Vorstandsvorsitzender ARCORA International GmbH.

Unterschrift


Sami Memili

Name und Anschrift der zuständigen Person für den Versandt technischer Unterlagen:
Sami Memili, bei ARCORA International GmbH
Marsstraße 9, 85609 Aschheim, GERMANY.

Unterschrift


Sami Memili

Aschheim, 04/2019

EN Declaration of EC conformity

We hereby declare that the machine de-scribed below complies with the relevant basic safety and health requirements of the EU Directives, both in its basic design and construction as well as in the version put into circulation by us. This declaration shall cease to be valid if the machine is modified without our prior approval.

Product
SINGLE DISC

MODEL
OR 17

CODE
00-133EL-AR

Relevant EU Directives
2006/42/CE (+2009/127/CE)
2014/30/UE
2011/65/UE

Applied harmonized standards
EN 60335-1
EN 60335-2-67

Applied national standards
-

Name and position of the person authorised to sign the Declaration
Sami Memili, Chief Executive Officer of ARCORA International GmbH.

Signature


Sami Memili

Name and address of the person authorised to supply the technical manual
Sami Memili at ARCORA International GmbH
Marsstraße 9, 85609 Aschheim, GERMANY.

Signature


Sami Memili

Aschheim, 04/2019

FR Déclaration
 de conformité **CE**

Nous certifions par la présente que la machine spécifiée ci-après répond de par sa conception et son type de construction ainsi que de par la version que nous avons mise sur le marché aux prescriptions fondamentales stipulées en matière de sécurité et d'hygiène par les directives européennes en vigueur. Toute modification apportée à la machine sans notre accord rend cette déclaration invalide.

Produit
 MONOBROSSE

MODÈLE
 OR 17

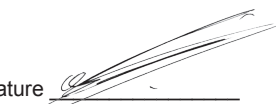
CODE
 00-133EL-AR

Directives européennes en vigueur
 2006/42/CE (+2009/127/CE)
 2014/30/UE
 2011/65/UE


Normes harmonisées appliquées
 EN 60335-1
 EN 60335-2-67

Normes nationales appliquées
 -

Nom et position de la personne autorisée à signer la Déclaration
 Sami Memili, Directeur Général de ARCORA International GmbH.

Signature 
 Sami Memili

Nom et adresse de la personne autorisée à fournir le fascicule technique :
 Sami Memili, auprès de ARCORA International GmbH Marsstraße 9, 85609 Aschheim, GERMANY.

Signature 
 Sami Memili

Aschheim, 04/2019

NL EG-verklaring
 van overeenstemming

Hierbij verklaren wij dat de hierna vermelde machine door haar ontwerp en bouwwijze en in de door ons in de handel gebrachte uitvoering voldoet aan de betreffende fundamentele veiligheids- en gezondheidseisen, zoals vermeld in de desbetreffende EG-richtlijnen. Deze verklaring verliest haar geldigheid wanneer zonder overleg met ons veranderingen aan de machine worden aangebracht.

Product
 MONOBORSTEL

MODEL
 OR 17

CODE
 00-133EL-AR

Van toepassing zijnde EG-richtlijnen
 2006/42/CE (+2009/127/CE)
 2014/30/UE
 2011/65/UE


Toegepaste geharmoniseerde normen
 EN 60335-1
 EN 60335-2-67

Toegepaste landelijke normen
 -

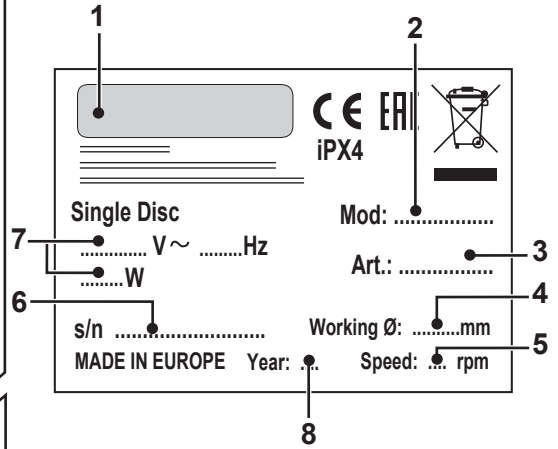
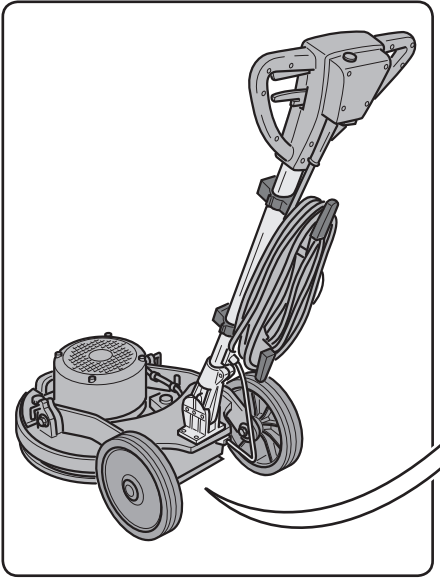
Naam en functie van de tot het ondertekenen van de verklaring gemachtigde persoon
 Sami Memili, Algemeen directeur ARCORA International GmbH.

Handtekening 
 Sami Memili

Naam en adres van de tot het afgeven van het technisch dossier gemachtigde persoon
 Sami Memili, ARCORA International GmbH Marsstraße 9, 85609 Aschheim, GERMANY.

Handtekening 
 Sami Memili

Aschheim, 04/2019



	1	2	3	4	5	6	7	8
DE	Hersteller	Modell	Artikelnummer	Ø Arbeit	Drehgeschwindigkeit	Serien-Nr.	Elektrische Eigenschaften	Baujahr
EN	Manufacturer	Model	Article code	Working Ø	Rotation speed	Serial number	Electrical characteristics	Year of construction
FR	Producteur	Modèle	Code de l'article	Ø de travail	Vitesse de rotation	N° de Matricule	Caractéristiques électriques	Année de construction
NL	Producent	Model	Artikelcode	Ø bewerking	Rotatiesnelheid	Serienummer	Elektrische eigenschappen	Bouwjaar
PL	Producent	Model	Kod artykułu	Ø pracy	Prędkość obrotów	Nr seryjny	Charakterystyka elektryczna	Rok produkcji
SK	Výrobca	Model	Kód položky	Pracovní Ø	Rýchlosť otáčania	Výrobné číslo	Elektrické charakteristiky	Rok výroby
CS	Výrobce	Model	Kód výrobku	Pracovní Ø	Rychlost rotace	Výrobní č.	Elektrické vlastnosti	Rok výroby
HR	Proizvođač	Model	Kod proizvoda	Ø rada	Brzina vrtnje	Serijski br.	Električne karakteristike	Godina proizvodnje
LT	Gamintojas	Modelis	Produkto kodas	Darbo Ø	Rotacijos greitis	Imatrikuliacijos Nr.	Elektros charakteristikos	Pagamini-mo metai
AR	الصانع	الموديل	الرمز	قطر العمل	سرعة الدوران	الرقم المتسلسل	المواصفات الكهربائية	سنة الصنع

Fig. 1

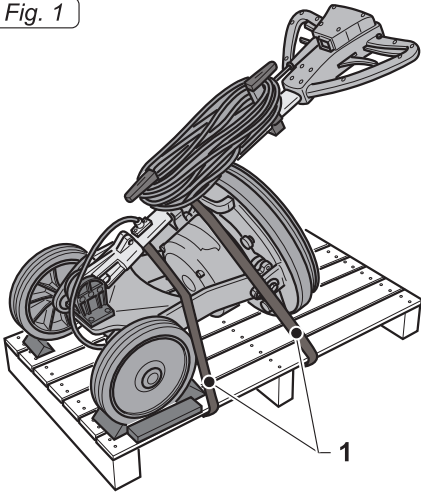


Fig. 2

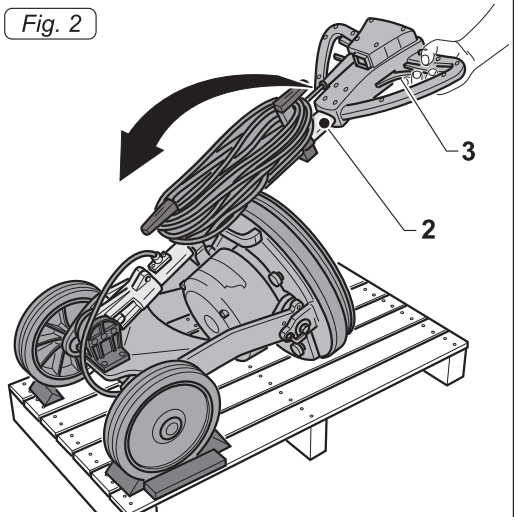


Fig. 3

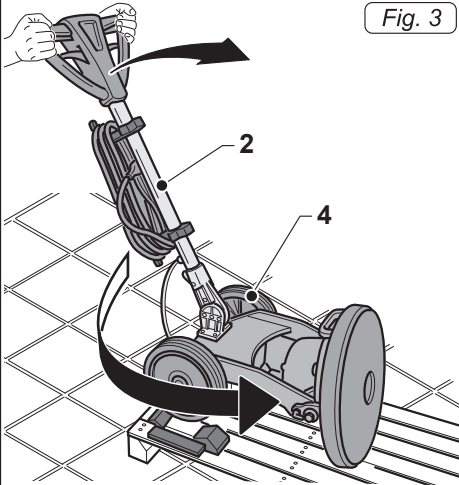


Fig. 4

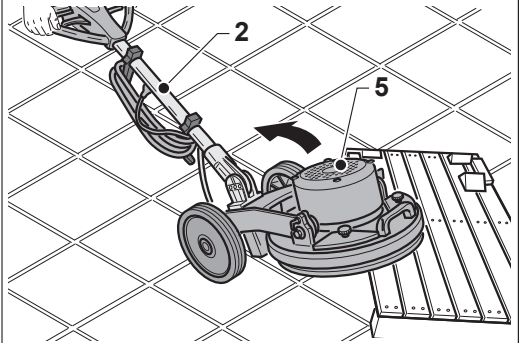
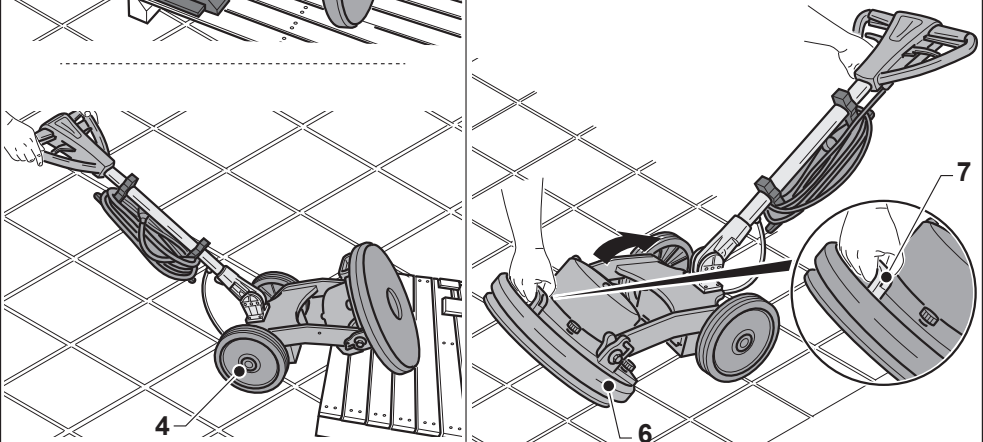


Fig. 5



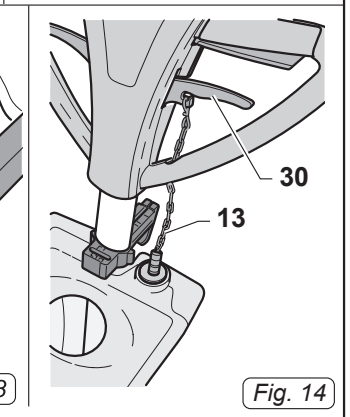
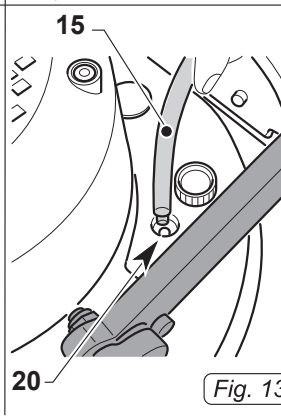
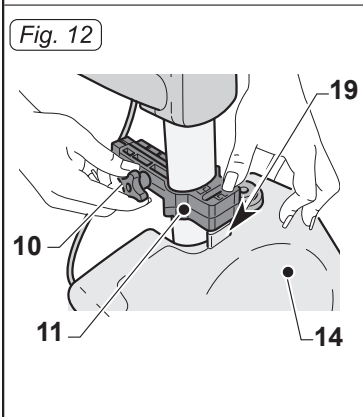
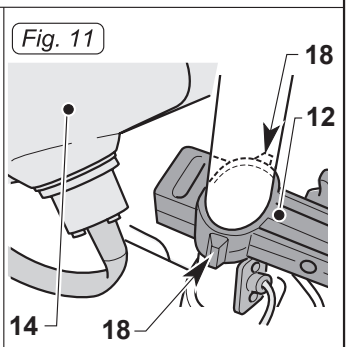
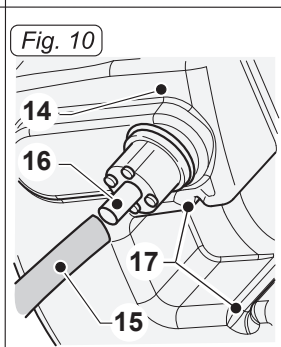
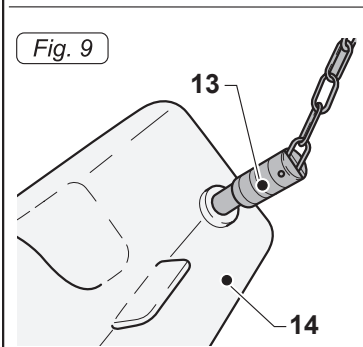
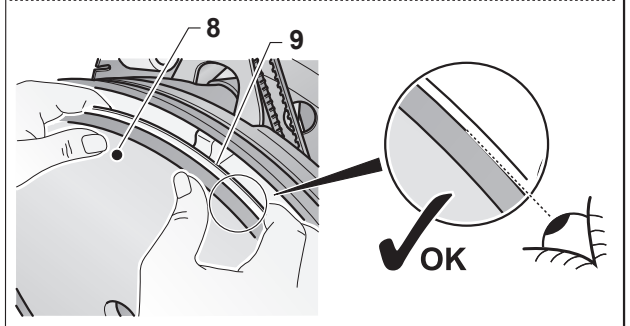
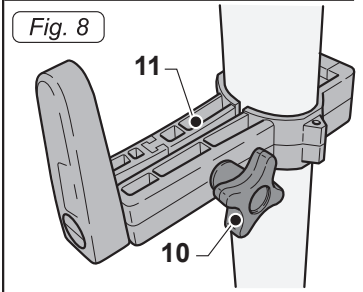
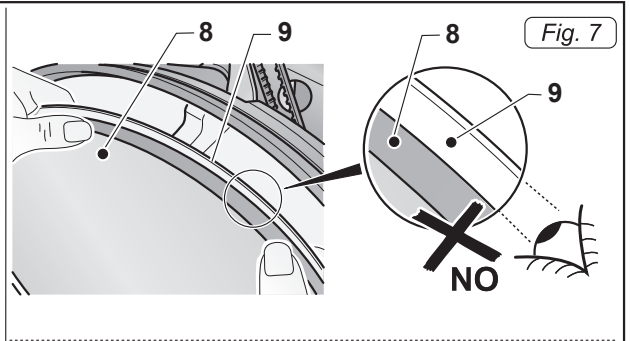
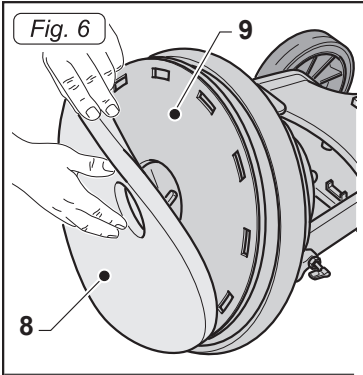


Fig. 15

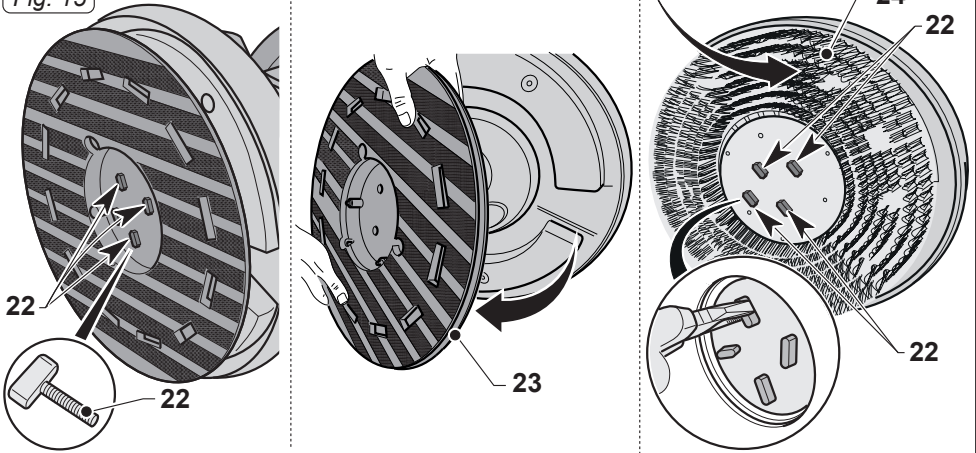


Fig. 16

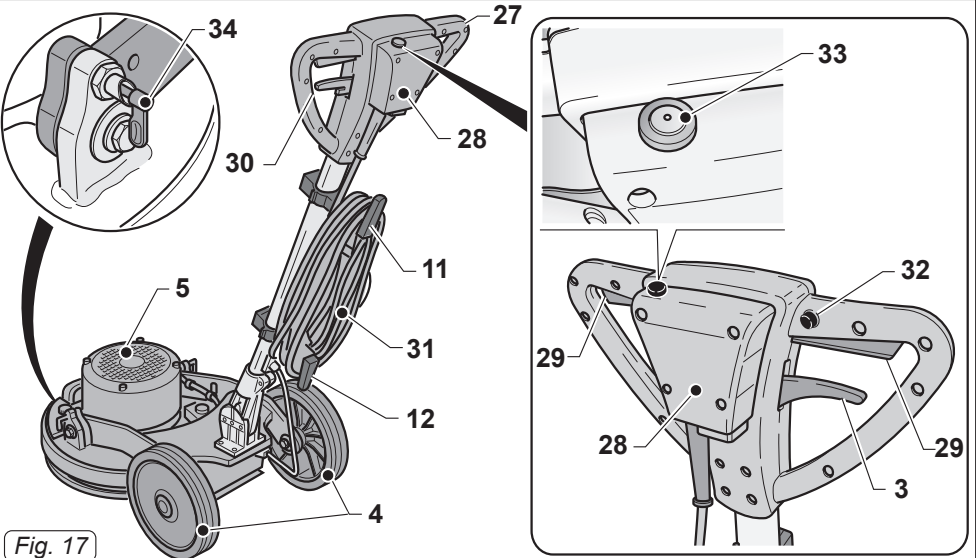
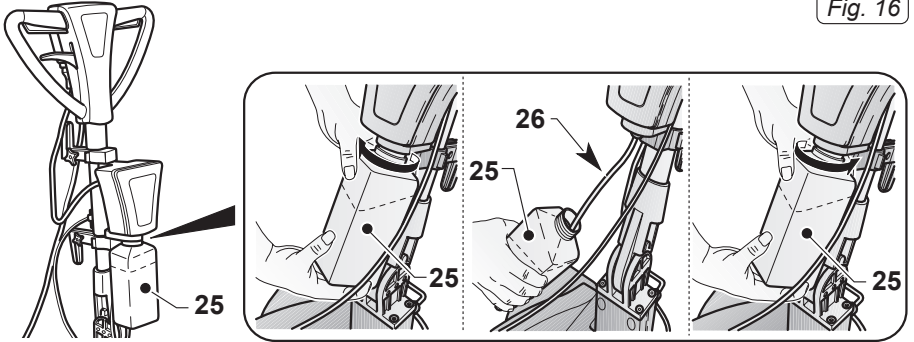


Fig. 17

Fig. 18

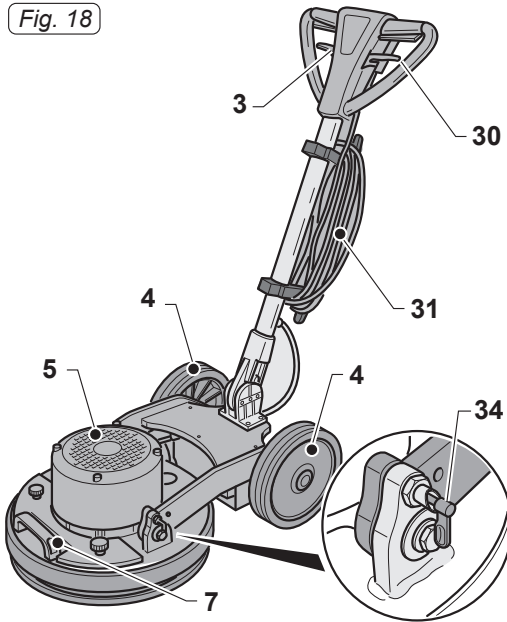


Fig. 19

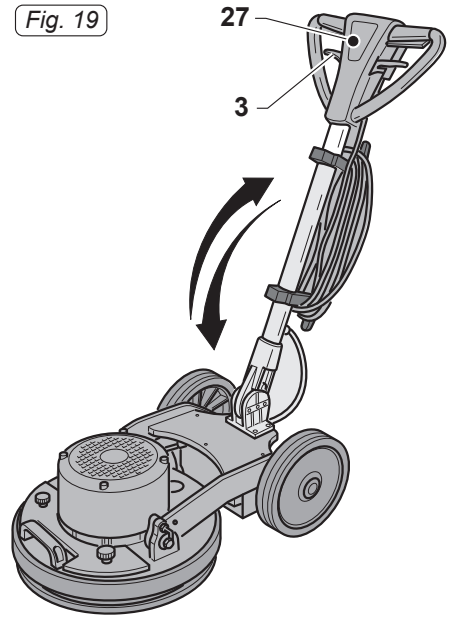


Fig. 20

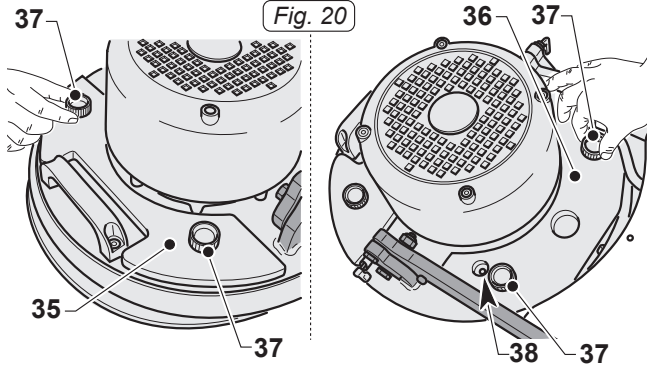


Fig. 21

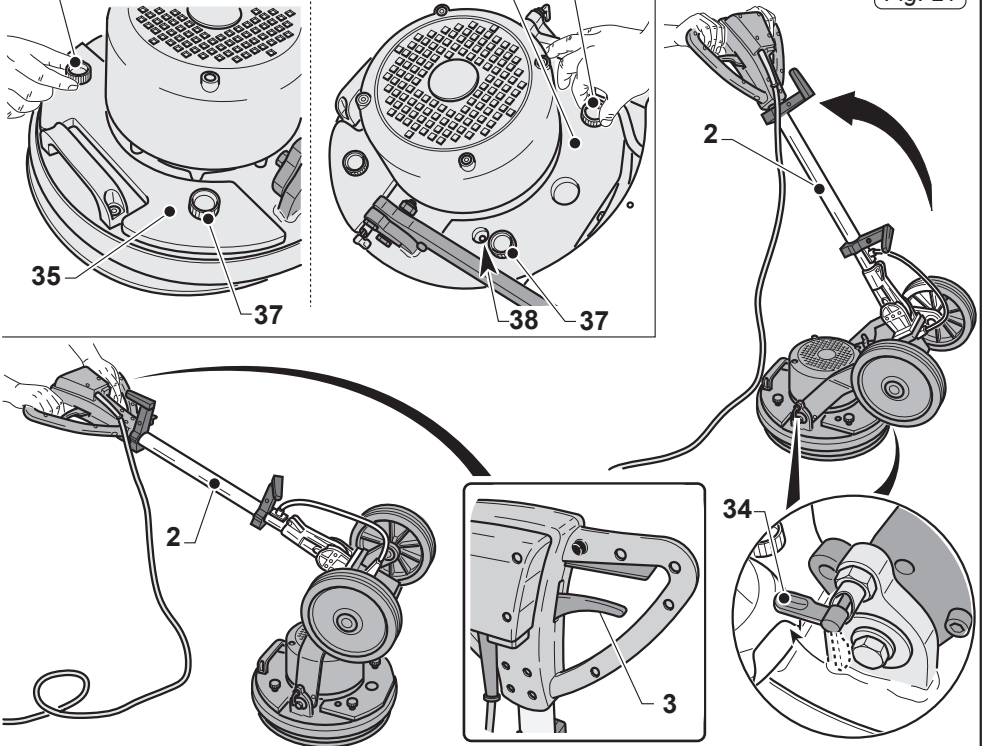


Fig. 22



Fig. 23

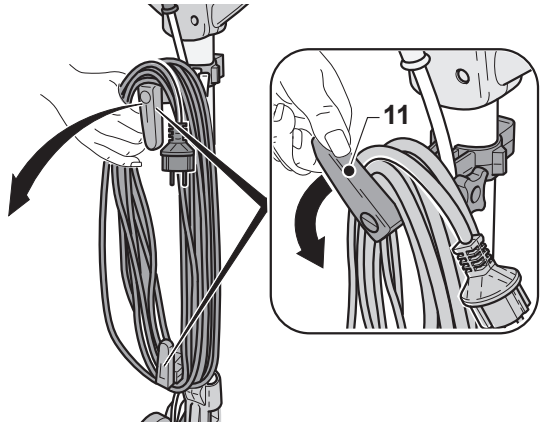


Fig. 24

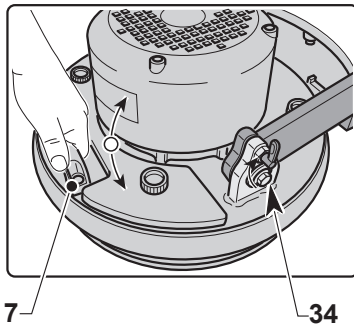
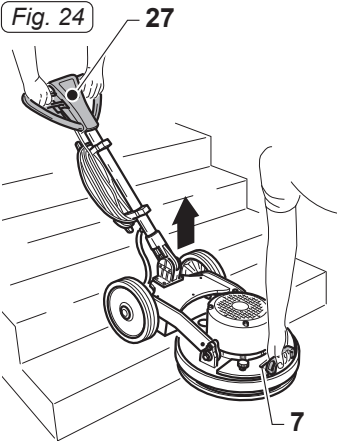


Fig. 25

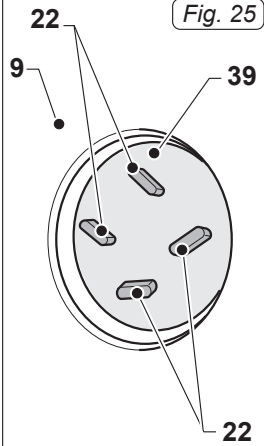


Fig. 26

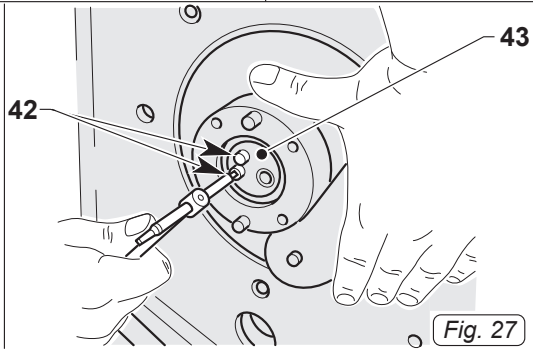
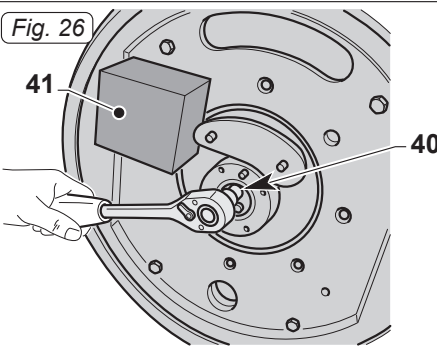


Fig. 27

Fig. 28

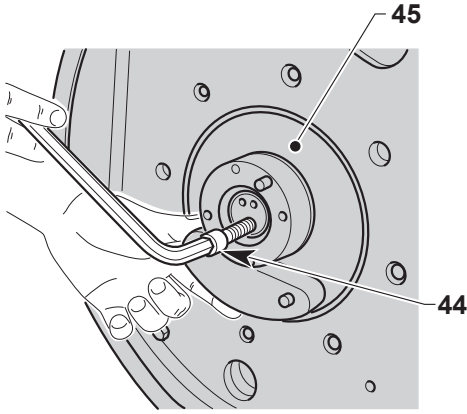
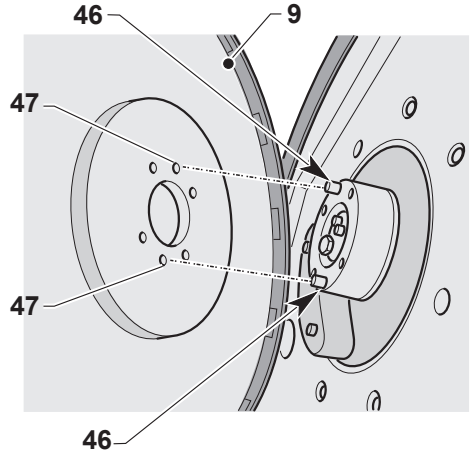


Fig. 29



DE	Deutsch DEUTSCH -1 (Originalanleitung)
EN	English ENGLISH -1 (Translation of original instructions)
FR	Français FRANÇAIS -1 (Traduction des instructions d'origine)
NL	Nederlands NEDERLANDS -1 (Vertaling van de originele instructies)
PL	Polski POLSKI -1 (Tłumaczenie z oryginalnej instrukcji obsługi)
SK	Slovenčina SLOVENČINA -1 (Preklad originálneho návodu)
CS	Česky ČESKY -1 (Překlad originálního návodu)
HR	Hrvatski HRVATSKI -1 (Prijevod izvornih uputa)
LT	Lietuviškai LIETUVIŠKAI -1 (Originalių instrukcijų vertimas)
AR	العربية 1 العربية (ترجمة الإرشادات الأصلية)

*Dear Customer,
Thank you for choosing one of our cleaning products.*

The floor cleaner you have purchased has been designed to satisfy users in terms of ease of use and reliability.

We are aware that, in order to remain so over time, a good product requires continuous updates aimed at satisfying the expectations of those who use it daily. To this end, we hope that you will be not only a satisfied customer but also a partner who does not hesitate to let us know your views and ideas resulting from personal experience on a day-to-day basis.

Contents

1.1 TECHNICAL CHARACTERISTICS	EN-3
1.2 INTRODUCTION	EN-3
1.3 INTENDED USE OF THE MACHINE	EN-3
1.4 NON-INTENDED USE OF THE MACHINE	EN-3
2.1 UNPACKING	EN-4
2.2 COMPONENT ASSEMBLY	EN-4
2.2.a - Pad assembly.....	EN-4
2.2.b - Assembling the tank	EN-4
2.2.c - Electrical spray accessory assembly (Optional).....	EN-4
2.2.d - Brush assembly	EN-4
2.2.e - Filling the electrical spray tank (optional)	EN-4
2.2.f - Electrical connection	EN-5
3.1 KNOWLEDGE OF THE MACHINE	EN-5
4.1 HANDLE TILT ADJUSTMENT	EN-5
5.1 GUIDE HANDLE	EN-6
6.1 OPERATION	EN-6
6.1.a - Checks to be performed before use.....	EN-6
6.1.b - Additional weights assembly	EN-6
6.1.c - Starting the machine	EN-6
6.1.d - Using the machine	EN-7
6.1.e - Use with overturned handle.....	EN-7
6.1.f - End of use and shutdown	EN-7
6.1.g - Transport	EN-7
7.1 MAINTENANCE AND CLEANING	EN-7
7.1.a - Cleaning the machine.....	EN-8
7.1.b - Emptying and cleaning the water tank	EN-8
7.1.c - Cleaning the nozzle of the spray accessory (Optional)	EN-8
7.1.d - Pad replacement.....	EN-8
7.1.e - Orbiting group disassembly	EN-8
TROUBLESHOOTING	EN-9
WIRING DIAGRAM	EN-10

1.1 TECHNICAL CHARACTERISTICS

	OR 17
Brush motor power	W 1300
Voltage	V 220/240
Frequency	Hz 50
Oscillations per minute	n. 1500
Working width - ø brushes	mm 430
Brush pressure	g/cm ² 48,2
Motor passage height	mm 285 WITH PAD H=25mm
Dry suction socket	YES
Noise emission	dB(A) 59.5
Drive	DIRECT
Cable length	12 m
Weight (without accessories)	71,5 kg
Size	mm 730X450X1200

1.2 INTRODUCTION



DANGER:

Before using the appliance, read the accompanying "SINGLE DISC SAFETY WARNINGS" booklet carefully.

This manual forms an integral part of the machine itself. It must therefore be kept in a safe place where it is accessible to all users (operators and maintenance personnel) throughout the life of the machine until it is scrapped.

1.3 - INTENDED USE OF THE MACHINE

The machine has been designed and built: for professional use, for cleaning floors and carpets, for polishing floors, for sanding floors (e.g. parquet and uneven surfaces).



DANGER:

Any other use releases the manufacturer from liability for harm to persons and/or property and invalidates any warranty condition.

1.4 - NON-INTENDED USE OF THE MACHINE



WARNING:

The machine is not intended for outdoor use.



DANGER:

- Do not wash floors with water above 50 °C;
- Do not use diesel/petrol or corrosive detergents to wash floors;
- Do not wash and suck up corrosive, flammable or explosive liquids, even if diluted.

2.1 UNPACKING (Figs. 1-2-3-4)

- Upon the machine delivery, remove the external packing and then cut the holders (1) (Fig. 1). Raise the handle (2) by pulling the unlocking handle (3) (Fig. 2);
- Lift the wheels (4) by leveraging the handle (2), rotate the machine and lay the wheels on the ground (Fig. 3);
- Lift the machine body (5) by leveraging the handle (2) and move the machine (Fig. 4).

2.2 COMPONENT ASSEMBLY

2.2.a - Pad assembly (Figs. 5/7)

- Tilt the head (6) of the machine; with one hand grip the handle (7) and at the same time push the machine backward.
- Mount the pad (8) on the pad holder (9) (Fig. 6).
- Make sure the outer perimeter of the pad (8) corresponds with the outer perimeter of the pad holder (9) and then lock it on the pad holder's teeth pressing down with your fingers (Fig. 7).



WARNING:

Use only pads supplied by the manufacturer for the specific machine model. Using other types of pads can compromise the safety of the machine.

2.1.b - Assembling the tank (Figs. 8-14)

- Loosen the knob (10) on the upper support (11) of the handle (Fig. 8).
- Make sure that the lower support (12) rests on the base of the handle joint (Fig. 11).
- Screw the chain (13) onto the top of the tank (14) (Fig. 9).
- Connect the tube (15) into the fitting (16) at the bottom of the tank (14) (Fig. 10).

- Place the tank (14) on the lower support (12), by aligning the tank slots (17) with the specific support guides (18) (Fig. 11).
- Press the tank (14) so that the slots are against the end stops on the lower support (12) guides.
- Lower the upper support (11) and attach its coupling to the coupling tab (19) on top of the tank (14) (Fig. 12).
- Tighten the knob (10) on the upper support (11) of the handle (Fig. 12).
- Connect the tube (20) fitting (15) to the hole on the machine body (Fig. 13).
- Attach the chain (13) to the hook of the water supply lever (30) (Fig. 14).

2.2.c - Electrical spray accessory assembly (Optional)



CAUTION:

The optional equipment may exclusively be assembled by a specialized technician following the assembly instructions that accompany the accessory.

2.2.d - Brush assembly (optional) (Fig. 15)

- Unscrew the four wing knobs (22) and remove the pad driver (23).
- Tighten the desired brush (24) in place of the driver with the wing knobs (22). Make sure to firmly tighten the wing knobs using pliers.

2.2.e - Filling the electrical spray tank (optional) (Fig. 16)

- Unscrew the tank (25) and remove it.
- Fill it with water and polishing wax. For dosing, refer to the instructions provided by the manufacturer of the polishing wax.
- Insert the suction tube (26) into the tank (25) and fully tighten.

2.2.f - Electrical connection

- Connect the machine power cable to a mains socket whose characteristics correspond to those shown on the machine's technical data plate.



WARNING:

- **Unwind the power cable completely before turning on the appliance.**
- **Use an extension cord only if in perfect condition and make sure the diameter is appropriate for the power of the appliance.**
- **Never allow the power cable to slide over sharp edges and do not crush it.**
- **The socket should be easily accessible.**
- **Make sure the electrical cable is not damaged.**

3.1 KNOWLEDGE OF THE MACHINE (Figs. 17-18)

- 4) Wheels
- 3) Handle tilt lever
- 5) Machine body
- 7) Head lifting and machine movement handle
- 11-12) Supports
- 27) Guide handle
- 28) Electric control box
- 29) Brush rotation start levers (on-off)
- 30) Water supply adjustment lever
- 31) Power cable
- 32) Brush rotation lever release button
- 33) Wax spray start button (optional)
- 34) Pusher tags (optional)

4.1 HANDLE TILT ADJUSTMENT (Fig. 19)



WARNING:

The handle position must be adjusted while the appliance is at a standstill.

- Pulling the lever (3) the handle position can be adjusted (27); when the lever is released, the handle is positioned and locked in the closest position required.



NOTE:

Adjust the handle to a comfortable position, depending on your height, in order to easily push the machine in straight paths. Never start the machine without having tilted the handle correctly.

5.1 GUIDE HANDLE (Fig. 17)

- 1) **Pad rotation lever release button (32)**
Press the button (32) to release the pad rotation start levers (29).
- 2) **Pad rotation start levers (29)**
Pulling the pad rotation levers (29) enables pad rotation.
When the levers (29) are released, pad rotation stops and the machine stops automatically.
The levers (29) should be kept pulled to achieve continuous machine operation.
- 3) **Water supply adjustment lever (30) (in the presence of an optional tank)**
Pulling the lever (30) activates the water supply for washing the floor.
When the lever is released (30) the water supply is interrupted.
- 4) **Polishing liquid spray button (optional) (33)**
When the button is pressed and held down, the polishing liquid spray is activated; if the button is released, the spray stops.



NOTE:

The spray works even when the pad is not rotating.

6.1 OPERATION

6.1.a - Checks to be performed before use

- If the electrical spray accessory is mounted (optional), check that it contains enough polishing liquid for the working phase and that the nozzle is properly connected and adjusted.
- Check the condition of the pad.
If worn, replace it.
- Check that the appliance, particularly the mains cable, is not damaged in any way that might compromise correct machine operation or the operator's safety.

6.1.b - Additional weights assembly (Fig. 20)

- If there's the need to increase the ground pressure, it is possible to assemble the additional weights Kit, which weighs 6,5 kg, or the double additional weights Kit which weighs 13 kg.
- Position the front weight (35) and the rear one (36) and fix them with the supplied knobs (37); short knob for the single additional weights kit, long knob for the double additional weights kit.
- It is advised to mount the pair of weights (front + rear) instead of a single weight in order to avoid abnormal vibrations.



NOTE:

While mounting the rear weight (36), check the correct position of the water hose passage hole (38).

6.1.c - Starting the machine (Fig. 17)



WARNING:

**Do not start the machine if it is tilted.
Do not start the machine if the pad is not correctly mounted.**



DANGER:

Ensure your hands are dry before using the appliance.

- Pull the lever up (3) and lower the handle until it reaches the height desired.
- Press the button (32) to release the pad rotation start levers (29).
- Pulling the levers (29) starts the machine.
- When both levers (29) are released, the machine stops.



WARNING:

Never wrap the network cable around the operator the operator's neck or the machine body.

6.1.d - Using the machine

(Fig. 17)

- After starting the machine, begin cleaning by keeping the levers (29) pressed, thus keeping the machine running and brush rotation active.



DANGER:

During operation, avoid passing over the power cable with the machine: this could cause serious damage and dangerous situations!



NOTE:

Using the machine in a fixed position with the pad rotation enabled for a prolonged period of time can cause damage to the floor.



NOTE:

When the levers (29) are released, pad rotation stops and the machine turns off

6.1.e - Use with overturned handle

(Fig. 21)

- Partially raise the handle (2) and unlock the pusher tags (34) with one foot.
- Slowly rotate the handle (2) until it automatically locks through the pusher tags (34).
- Adjust the handle (2) height through the lever (3) depending on your needs.

6.1.f – End of use and shutdown

(Fig. 17-22-23).

- Release the levers (29) to stop pad rotation and turn off the machine (Fig. 17).
- Put the handle in an upright position.
- Remove the tank (Optional), empty the solution and clean the nozzle as indicated in the maintenance paragraph.



WARNING:

Do not leave the machine stopped if the pad is mounted and not raised in order to prevent them from being damaged.

- Unplug the power cable from the socket and wrap it around the cable reel supports.
- Roll up the cable on the supports (11) (12) (Fig. 22).
- To remove the cable from the supports, turn the hooks (11) (12) inward and remove the cable without necessarily unwinding it (Fig. 23).

6.1.g - Transport (Fig.24)

Making sure that the mains plug is disconnected and the handle is in an upright position, lift the machine body by turning the handle downwards.

The machine can then be transported on the wheels.

If it is necessary to lift the machine for loading on trucks or for climbing stairs, proceed as follows:

- Release the two pusher tags (34) and, through the handle (7), slightly move the head so that the two pusher tags hook correctly.
- Two persons must raise the machine: one on the guide handle (2) and the other through the handle (7).

7.1 MAINTENANCE AND CLEANING



WARNING:

For information and warnings relating to maintenance or cleaning, follow what is described in the “Safety warnings for single disc” manual, accompanying this document.

OPERATIONS TO BE CARRIED OUT DAILY

7.1.a - Cleaning the machine

Clean the machine with a damp cloth and then wipe it with a clean, dry cloth to prevent the formation of scale due to the effect of chemicals.



WARNING:

Do not use solvents, acids or corrosive substances for cleaning the machine. If the pad is dirty, wash it at a maximum temperature of 60 °.

7.1.b - Emptying and cleaning the water tank



WARNING:

Once you have finished washing, you must drain and clean the water tank to prevent deposits or scale.

To empty the water tank, release it from its supports.

7.1.c - Cleaning the nozzle of the spray accessory (Optional) (Figs. 16-17).



WARNING:

Once you have finished polishing, you must drain and clean the water tank to prevent deposits or scaling and you must clean the nozzle.

- Remove the tank (25) (Fig. 16), empty the solution, rinse it and refill it with water.
- Position yourself with the machine near a discharge drain and press the button (33) (Fig. 17) until the tank is empty.

OPERATIONS TO BE CARRIED OUT WHEN NECESSARY

7.1.d - Pad replacement

The pad must be replaced when it is worn and its thickness is less than 10 mm; see the "Pad Assembly" paragraph for replacement instructions.

7.1.e - Orbiting group disassembly (Fig. 25-26-27-28-29)

- Unscrew the four wing knobs (22) and remove the disc (39) and the driver disc (9).
- Unscrew the hexagon head screw (40) by blocking the rotation through a contrast surface (41)
- Unscrew the two screws (42) and remove the cover (43).
- Tighten the supplied M12 Allen screw (44), to extract the orbiting group (45); block the rotation using a contrast surface if necessary.



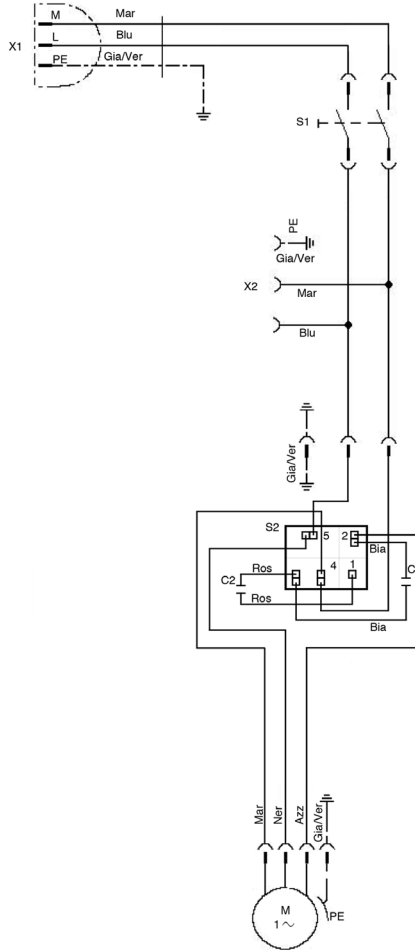
NOTE:

Reassemble everything proceeding in reverse order to the disassembly operations: when re-assembling the driver disc (9), centre the two plugs (46) of the orbiting group (45) on the holes (47) of the driver disc.

TROUBLESHOOTING

PROBLEM	CAUSE	SOLUTION
Although the lever release button and brush rotation levers are pressed at the same time, the machine does not start.	The appliance is unplugged.	Plug the appliance in.
The pad holder does not rotate.	The brush/pad holder rotation lever is not pressed. Presence of foreign bodies.	Press the lever. Remove any foreign bodies stuck in the appliance.
No water is released	The tank is empty. Water supply lever not pressed.	Fill the tank. Press the lever.
Polishing liquid is not released.	The tank is empty. Button not pressed.	Fill the tank. Press the button.
Insufficient floor cleaning	Pad or chemical product not suitable. Pad worn.	Use a pad or chemical product that is appropriate to the type of floor to be polished. Replace the pad.
The machine operates erratically or vibrates heavily.	Check that the pad is perfectly centred in the pad holder. Pad not suited to floor type.	Replace the pad, centring it correctly in the pad holder. Use a pad suited to the floor surface.
The machine turns off unexpectedly during operation.	Motor thermal protection activation.	Restore the reset button until it "Clicks" and make sure to work in the correct range.

WIRING DIAGRAM



- C1** Operating capacitor
C2 start capacitor
S2 Voltmetric relay
M1 Electric motor
S1 Main power switch
X1 Power plug
X2 Auxiliar socket

- Ros** Red
Bia White
Mar Brown
Blu Blue
Gia/Ver Yellow/Green
Azz Light blue
Ner Black

ARCORA®

GERMANY

DEALER



Cod. AR30-931 - 1^a ed. - 04/2019

ARCORA INTERNATIONAL GmbH

Marsstraße 9 , 85609 Aschheim by Munich - Germany
P. +49 (0)89 14 33 29 3-0 - F. +49 (0)89 14 33 29 3-29 - M. info@arcora.de

www.arcora-group.com

MADE IN EUROPE



CE